

# OFF TOWN

FASHION AND LIFESTYLE

SPECIAL EDITION

TRENDS

## AVANT LES DEBUTS

PRADA FALL '24

TRAVEL

## KRABI

A PARADISE OF NATURAL BEAUTY AND LUXURY

EDITORIAL

## GRUNGE IN THE OLD VOXAL

PHOTOGRAPHED BY ANTON BUREEV

ARCHITECTURE

## FOREST RETREAT HOUSE

SUSTAINABLE FAMILY HOME

TRENDS

## DI FELICE'S PARISIAN TRANSFORMATION

JEAN PAUL GAULTIER FALL COUTURE

# SHADES OF GREEN

Starring Kiera Taylor  
Photographed by James Veira

ISSUE #44 VOL. 12 | JULY 2024  
WWW.OFFTOWNMAGAZINE.COM







JIMMY CHOO

# OFF TOWN

---

## **FOUNDER AND DIRECTOR**

Emiliano Santapaola

## **DIRECTOR ASSISTANT**

Mauro Figueroa

## **FASHION AND TRENDS JOURNALISTS**

Jorgelina Escalante Infante

Mirta Marquez

Sarah Green

## **LIFESTYLE EDITOR**

Sebastian Reyes

## **ART**

Clara Otero

Ornella Ordonez

Juan Arbas

## **COLLABORATORS**

Max Barañao

Alexander Hill

Ivan Herrera

## **PRESS AND EVENTS**

Roxana Valdez

Katherine Baker

## **SOCIAL MEDIA MANAGER**

Sara Basabilvaso

## **PR AGENCIES**

Aff Comunicazione, Agentry PR, Autrement PR, Caroline Charles PR, Deborah Hughes Inc, Edelman, Feedback Pr, Flying Solo Pr, Grupo Mass Pr, Lanusse Consultores, Logos PR, Lucien Pages Communication, Marina Allende, Mazal'n Comunicaciones, M Punto, Muchnik, Netflix, Personally I, Urban Press, The Riviere Agency, People's Revolution PR, MAO Public Relations and Studio Tiss.

## **DESIGN**

SGM

## **SOCIAL**

@offtownmagazine

offtownmagazine.com

## **CONTACT/ADVERTISING**

offtownmagazine@gmail.com

## **SANTAPAOLA GLOBAL MEDIA**

@sgmok\_

450 W 47Th St, New York New York.

A fashion advertisement for Bottega Veneta. The image shows a woman with dark hair, wearing a multi-layered, colorful outfit consisting of a shawl with horizontal stripes in light blue, red, and cream, and a skirt with vertical pleats in shades of blue, grey, and black. She is standing on a pink, curved staircase, looking to her right. She is holding a white, woven basket. The background is a large, textured, pink structure with circular openings. The text "BOTTEGA VENETA" is overlaid in white, serif capital letters across the center of the image.

BOTTEGA VENETA

OFF TOWN



**Jean Paul Gaultier**  
*by Nicolas Di Felice for Fall Couture*



Nicolas Di Felice, became the greenest designer to recently collaborate with Jean Paul Gaultier, coinciding with the start of Gaultier's guest collections project during the pandemic. Although he was just a child in Belgium when Madonna wore Gaultier's iconic conical bra, the French designer left a lasting impression on him and many queer and diverse people around the world, representing Paris as a city of possibilities and celebration of diversity.

Di Felice's collection tells the story of an arrival in Paris with covered garments: jackets, long-sleeved dresses, long skirts and necklines that reach up to the face. As the parade progresses, garments gradually come off, revealing first the head, then the shoulders, and the hands are inserted into the gaps in the fabric in an erotic gesture. This transition is accompanied by a chromatic change from dark to light throughout the presentation.

Each look in the collection was inspired by an item from the Courrèges archive, but the unifying element was the use of brackets. Di Felice found a sample of fabric embroidered with hooks in the archive, which he used as a connective element for the rectangles and squares that make up the collection's narrow, fitted shapes in soie gabardine, gazar and taffeta.

The designer highlighted the versatility of the hooks, allowing the user to adjust the level of exposure of the garments. This concept of adaptability manifested itself in a slip dress unbuttoned to the waist, revealing a sleeveless cape underneath decorated with stud-like hooks. A prominent example of this technique was a chainmail dress with 40,000 interconnected clasps, combining strength and fragility in a single piece.



OFF TOWN

# Forest Retreat House Architecture.



*A family home in rural Ontario was designed as a retreat for clients who live abroad but were looking for a Canadian property for their large family and guests. The house was designed to make young teenagers, extended families and large dogs comfortable during long stays, encouraging activities such as hiking and snowshoeing. The design honors Canadian identity by harmonizing visually and materially with Ontario's natural environment. Materials were used responsibly and energy saving systems were implemented. A highlight of the project is the preservation of the natural landscape: a rocky area overlooking a wildflower meadow was kept intact, avoiding tree felling.*



Sustainability is a fundamental pillar of the project in several aspects. The home celebrates local craftsmanship by incorporating exposed steel fittings made by local tradesmen and custom-made wall and ceiling panels by local carpenters.

Traditional roofing slate is used to clad the walls, evoking traditional patterns and bringing a sense of authenticity to the design. Unlike modern construction with heavy wooden posts and beams, this project prioritizes meticulous, custom work, away from computer screens.

The house was built on a previously cleared site atop a hill, overlooking 100 acres of woodland, meadows and wetlands.

This approach not only avoids cutting down trees for construction, but also turns landowners into custodians of extensive natural habitats, benefiting local wildlife such as birds and other wildlife.



Under one roof, this house fuses a contemporary approach with warmth, moving away from modernist box-type forms.

A singular slate-clad volume suspended 12 meters above the ground, accessible by a walkway, houses the children's bedrooms, promoting privacy without completely isolating them. The most distinctive element is the long tent-shaped roof, covered in copper, which follows the topography of the land.

Although technically challenging due to its 60 meters in length, the roof was designed to appear lightweight and blends harmoniously with the surroundings. At the entrance, the roof rises like a bird's wing from the underlying garage, creating a sheltered outdoor terrace.

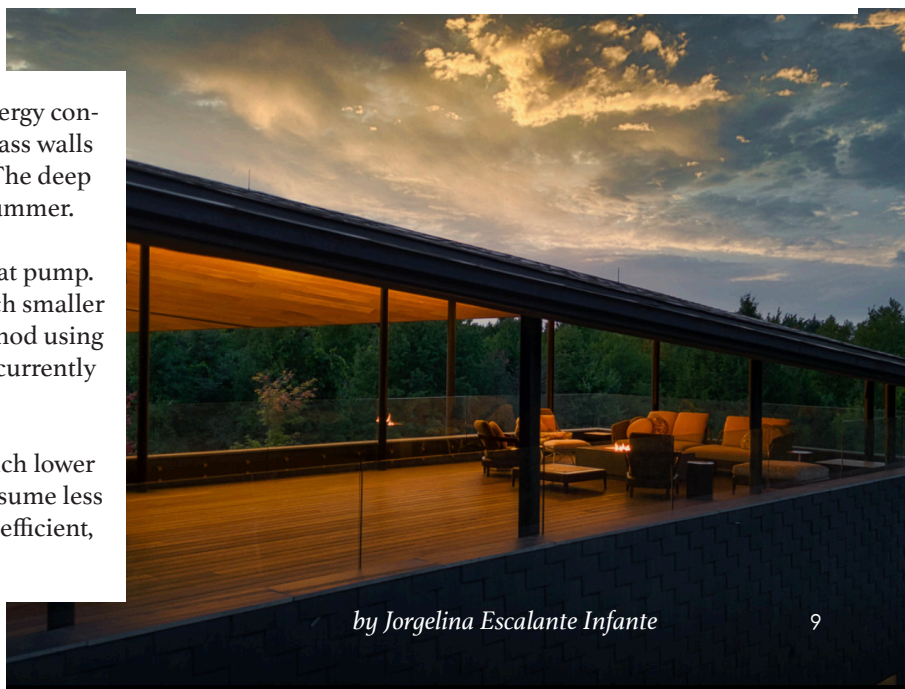
The design emphasizes craftsmanship and materiality, reinterpreting the client's concept of "rusticity" by highlighting the "hand mark" over industrial aesthetics. Despite the contemporary nature of the construction, the project shows how "human craftsmanship" can prevail over mass production and heavy technology, setting a new standard for the conscious integration of architecture with the natural environment.



The house also uses several techniques to reduce energy consumption. The roof is very well insulated and the glass walls are triple pane, which greatly reduces energy loss. The deep roof overhang also reduces passive solar gain in summer.

The house is heated and cooled by a geothermal heat pump. Because it runs on electricity, a heat pump has a much smaller carbon footprint than the most popular heating method using natural gas, a fossil fuel (Ontario's electricity grid is currently about 90% GHG-free).

Geothermal heat pumps can not only operate at much lower temperatures than air heat pumps, but they also consume less electricity. The faucets and septic system are highly efficient, which guarantees responsible use of water.



OFF TOWN

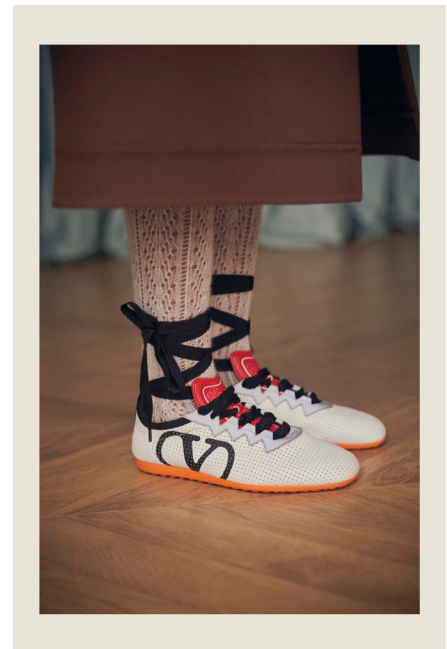
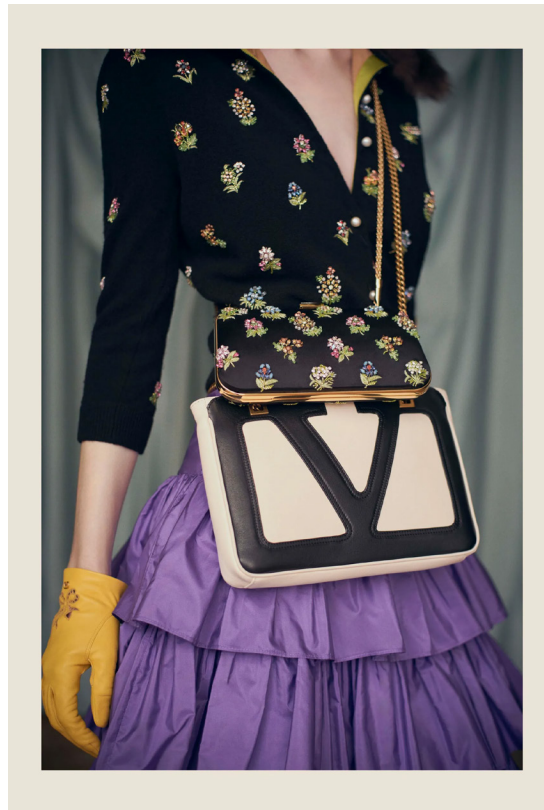


# Avant les Débuts

*Valentino Resort '25*

Alessandro Michele, known for his prolific creativity, has taken on the role of creative director at Valentino with an initial focus on the resort collection. Called “Avant les Débuts,” this debut collection by Michele for the Roman fashion house consists of 171 ready-to-wear looks, accompanied by 93 images showcasing charming shoes, bags and accessories. The presentation took place via a Zoom call with a select group of editors, from Michele’s apartment, decorated with personal memorabilia.

Alessandro Michele is known for his ability to create quickly, a trait he also displayed at Gucci when he transformed men’s fashion. Although the collection for Valentino does not seek to be so disruptive, Michele emphasized the importance of creating a true wardrobe, with precision and complexity, connected with the characteristic elegance of Valentino Garavani. Michele, relaxed and eloquent, explained how he became fascinated by the “magical and powerful place of Valentino,” and how exploring the treasures of the brand’s archive was crucial to his creative process. Alessandro Michele, speaking about his approach to Valentino, mentioned that he did not draw specifically on any decade of Valentino Garavani’s work although he admitted his fascination with the 1968 Sfilata Bianca, from which he “stole some of that whiteness, of that funny”. The designer also suggested an influence of the feminine refinement and hippy chic style of Valentino in the 70s, but stated that he was carried away by the lightness of the ruffles and details for no other reason than to connect with the feeling of grace that these they evoke. While he mentioned the ‘80s lightly,



Michele expressed his interest in further exploring how Valentino approached that decade, highlighting his focus on extreme softness and sophistication, rather than overt hedonism. Regarding the discourse on gender, Michele reflected on how he will address this issue at Valentino, given his history at Gucci. He explained that the men and women in his look-book share an idea of masculinity and femininity that he has always been interested in, ensuring that his creative practice arises from his imagination and emotions. Michele emphasized that any evolution at Valentino will occur naturally, reflecting who he is and how he works.

OFF TOWN

# *Shades of Green*

*Photography: James Veira @veirastudios  
Model: Kiera Taylor @kieramtaylor*















# Grunge In The Old Voxal

Photography: Anton Bureev @a.v.byreev  
Model: Yana Fenchak @yana\_fenchak







OFF TOWN







OFF TOWN

E  
G  
D

4

PROTECTED BY  
CALIFORNIA  
PROTECTION INDUSTRY INC.  
800 464-6788  
815 693-0918

2 \$

nger

2

# NoHo Spin Cycle, City Vibes Unfolded

Photography: Brian Wangenheim @brian\_photographer\_111  
Model: Crystal Gonzales @crystalrgonzales













OFF TOWN





# *Embracing The Sun*

*Photography: Anastasiia Rudnitskaia @sad\_moonflower*

*Fashion Stylist, Wardrobe Stylist and Model: Elena Zhukova @el\_zhukova.stylist*

*Makeup Artist: Ksenia Zharkova @mua\_ksu*



*costume LIMÉ STUDIO @lime\_official  
accessories ZARA @zara*





shoes STRADIVARIUS @stradivarius  
pants UNITED COLORS OF BENETTON @benetton  
t-shirt BEFREE @befree\_fashion







*skirt and bag BEFREE @befree\_fashion  
corset VINTAGE*







OFF TOWN



# *Jordyn Hageman*

*Photography: Toree Marcel @wild.yet.zealous and Kimberly Proffitt @thewhitefern\_photography*

*Model: Jordyn Hageman @mammansadees*











OFF TOWN



total look AMAZON AND SHEILA5











# Krabi, Thailand.



*In southern Thailand, this city acts as a gateway to its eponymous province, renowned for its dense jungles, majestic limestone cliffs, and a scattering of serene islands embraced by the Andaman Sea along its captivating shoreline. Celebrated for its sweeping views, pristine beaches, and a constellation of islands, it boasts some of the globe's most magnificent coral reefs, making it an exceptional destination for enthusiasts of coral diving and marine exploration.*



### *Where To Stay*

#### *Pimalai Resort & Spa*

Pimalai, situated in a lush tropical forest with 900 meters of pristine sandy beach, is the quintessential destination in the Andaman Islands. This beach resort offers all the luxury amenities, surrounded by stunning natural beauty, away from the crowds and with the unique serenity of the sound of waves gently crashing on the sand.

### *What To Know*

Krabi offers a variety of attractions including hot springs, a wildlife sanctuary, sea caves, vibrant coral reefs and exotic marine life. Its national parks include the idyllic islands of Koh Phi Phi and Koh Lanta. You can spend weeks exploring Krabi and still feel eager for more. Additionally, this Thai region offers some of the most photogenic sunsets in the country, accompanied by spectacular displays of cloud-to-cloud lightning, best enjoyed from beachside bars and restaurants.

### *Where To Eat*

#### *Sea Salt Krabi*

Sea Salt Krabi Restaurant celebrates people coming together with a rich fusion of flavours, inspired by the traditional wood-fired grill and Mediterranean culinary heritage. Located in Ao Nang, Mueang Krabi District, it specializes in good cocktails and also contains vegan dishes.

### *What To Do*

#### *Phi Phi Early Bird*

Escape the crowds and explore Krabi's 4 islands on a leisurely boat tour. This 8-hour excursion offers a relaxed way to make the most of your time in Krabi, perfect for groups of friends looking for diverse activities. Swim, sunbathe, snorkel, and unwind as you visit iconic spots like Maya Bay, renowned from the movie 'The Beach', Viking Cave, Monkey Beach, and beyond. Keep your camera ready for the stunning rock formations of Koh Mor and Koh Tap along the way.

### *Visit Ao Nang*

Ao Nang as the main center for most visitors in the region. It is described as a coastal strip with a variety of accommodation, from guest houses to hotels, as well as bars, restaurants and souvenir shops. Ao Nang continues to grow due to increased tourism, and its expansion extends northwards, reaching Nopparathara. Ao Nang is known as the main starting point for boat trips to the nearby islands and secluded beaches of Cape Phra Nang. In particular, Railay, located on Cape Phra Nang, is famous for its history as a hippie enclave and its natural beauty.





TO



D'S



# VICTORIA BECKHAM

THE JUMBO W11 TOTE  
AS SEEN BY JUERGEN TELLER